

NUTORK[®]

CE SIL3  EAC

Actuators & Valves

Solenoid Operated Valve

Poppet construction and design: 3/2 way & 4/2 way

The max. ports size up to 2"(DN50)

Material in aluminum alloy and 316SS



NUTORK CORPORATION

Directional Control Function:

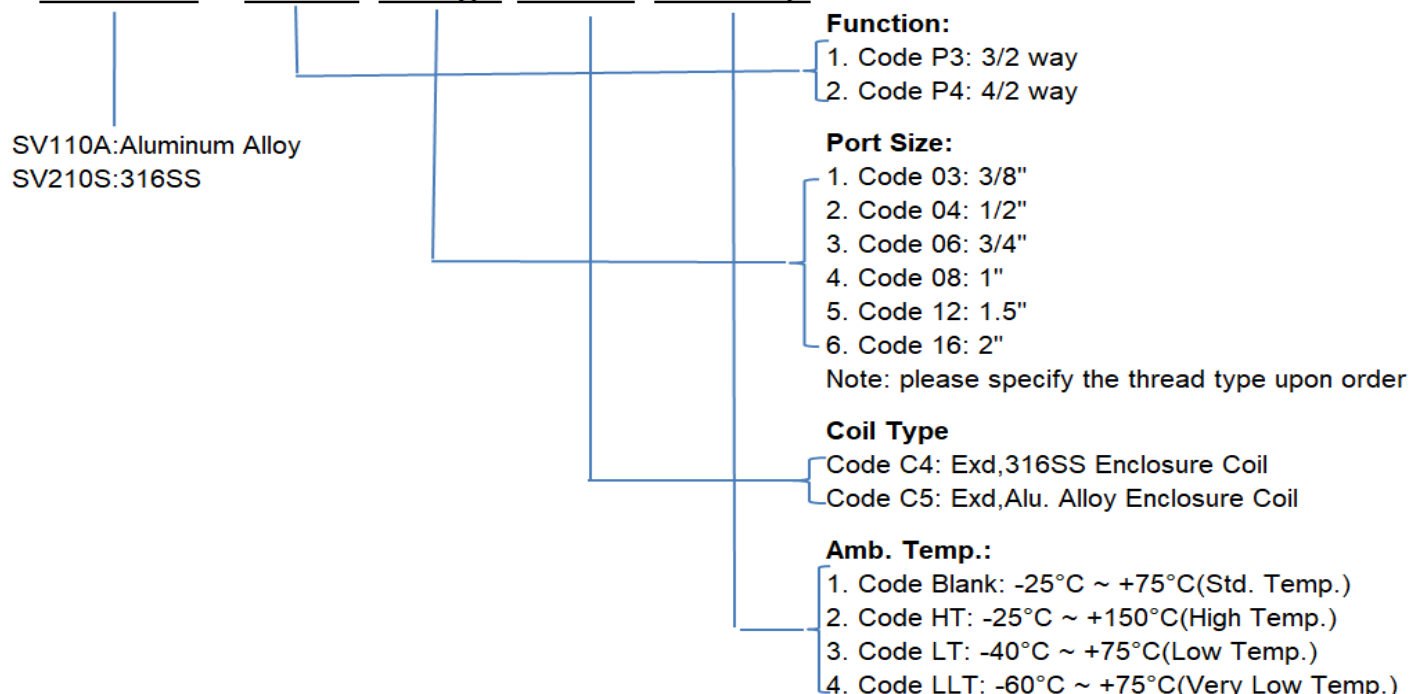
Directional control valves function is to control the direction of flow in the pneumatic circuit. Directional control valves are able to control the way the air passes. These valves can regulate the airflow being capable to stop fluid flow, allow fluid flow, and change the direction of fluid flow.

Technical Data(Solenoid Controlled)

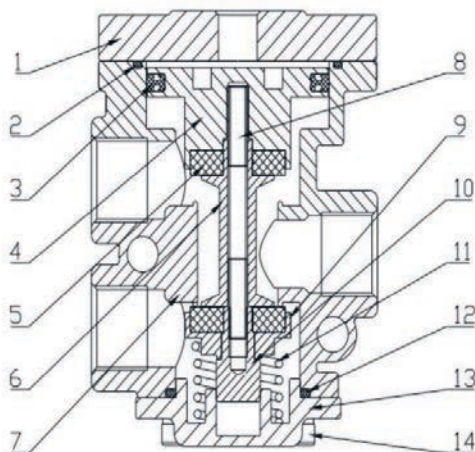
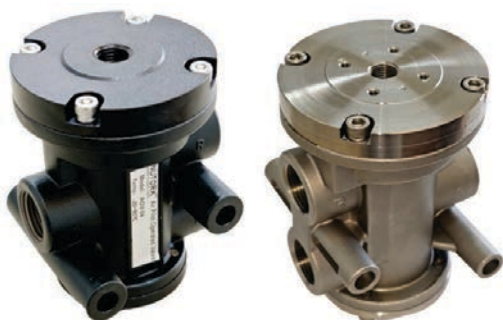
Function		3/2 and 4/2 way solenoid operated valve					
Construction Design		Poppet construction for high direct tolerance					
Construction Material	Valve body	Aluminum alloy or 316SS					
	Poppet	Acetal and 316SS					
	Seals	Buna-N(std.), Viton(High Temp.), HNBR(Low Temp.) & Silicone(EAC Low Temp.)					
Solenoids (The other solenoid coil is available upon requested)	Coil Type	Electrical Entry	Protection Class	Power Consumption		Operating Voltage	Insulation Class
	Code C4:	1/2"NPT or M20x1.5	IP67/ ExdIICT6	DC 2.5W, AC@50Hz 3.8VA		24VDC, 120/240VAC @50/60Hz	H
	Code C5:						
	Duty Cycle	100% continuous service					
Fluid		Filtered air. No lubrication needed, if applied it shall be continuous					
Mounting		Inline type, Orientation:in any position,preferably vertical					
Max. working pressure (bar)		10.0					
Minimum piloting pressure (bar)		2.0					
Ambient Temperature °C		-25°C ~ +75°C(Std. Temperature)					
		-25°C ~ +150°C(High Temperature)					
		-40°C ~ +75°C(Low Temperature)					
		-60°C ~ +75°C(Very Low Temperature)					
Flow rate at 6 bar with Δp=1(Nl/min)	3/2 Way	3800	4850	10500	14000	49000	57000
	4/2 Way	2750	3200	9350	13900	N/A	N/A
Orifice size (mm)		10	15	20	25	40	50
Working ports size(G or NPT)		3/8"	1/2"	3/4"	1"	1.5"	2"
Pilot air conn.(G or NPT)		1/4"					

Ordering Information:

Basic Model Function Coil Type Port Size Amb. Temp.



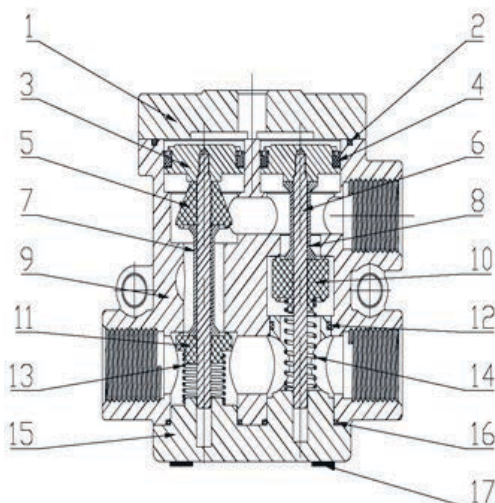
3/2 way:



Part list:

Label	Name	Material	Label	Name	Material
1	Top Cover	Aluminum Alloy/ Stainless Steel	8	Screw	Stainless Steel
2*	O-ring	NBR/ Silicone Rubber	9	Valve Seat	Aluminum Alloy/ Stainless Steel
3*	Piston Sealing Ring	NBR/ Silicone Rubber	10	Hexagonal Nut	Stainless Steel
4	Piston	Aluminum Alloy/ Stainless Steel	11*	Compression Spring	Spring Steel/ Stainless Steel
5*	Flat Cushion	NBR/ Silicone Rubber	12*	O-ring	NBR/ Silicone Rubber
6	Spool	Stainless Steel	13	Bottom Cover	Aluminum Alloy/ Stainless Steel
7	Valve body	Aluminum Alloy/ Stainless Steel	14	Hexagonal Screw	Stainless Steel
*Recommended Spare Parts		Please select appropriate spare parts according to the port size and model, included labels 2, 3, 5, 11, and 12.			

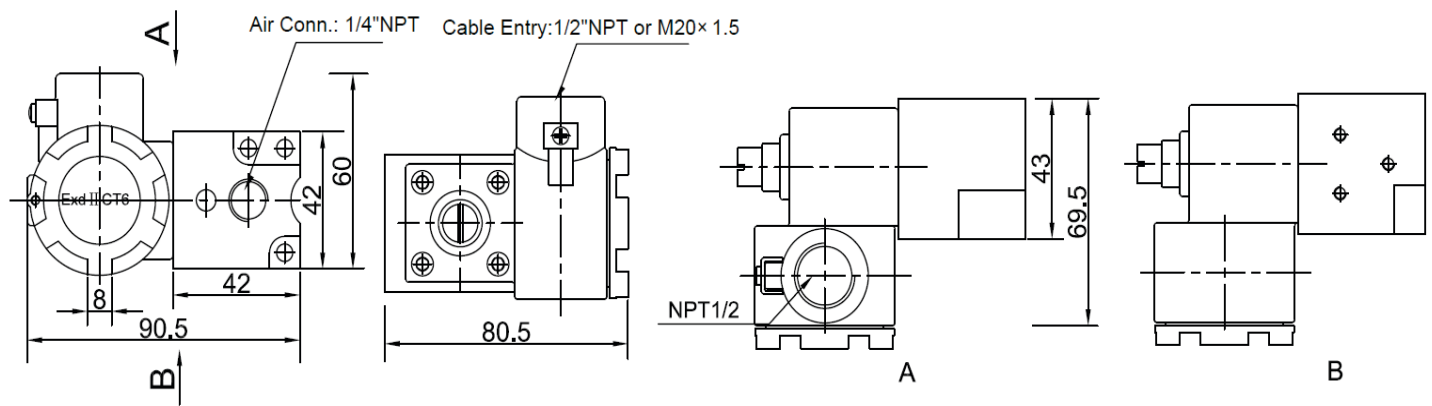
4/2 way:



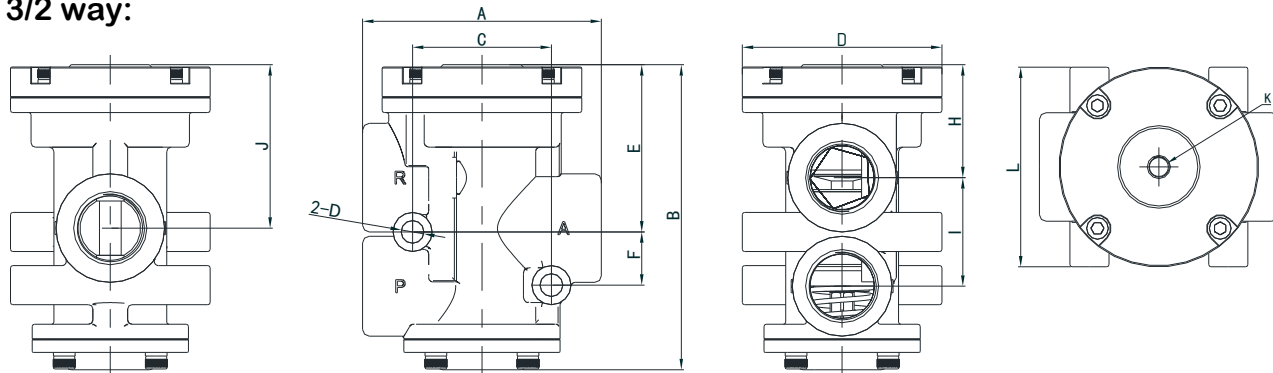
Part list:

Label	Name	Material	Label	Name	Material
1	Top Cover	Aluminum Alloy/ Stainless Steel	10*	Sealing Element B	Assembly
2*	O-Ring	NBR/ Silicone Rubber	11*	Sealing Element A2	Assembly
3	Piston	Aluminum Alloy/ Stainless Steel	12*	O-ring	NBR/ Silicone Rubber
4*	Piston Sealing Ring	NBR/ Silicone Rubber	13*	Compression spring	Spring Steel/ Stainless Steel
5*	Sealing Element A1	Assembly	14*	Compression spring	Spring Steel/ Stainless Steel
6	Spool	Stainless steel	15	Bottom cover	Aluminum Alloy/ Stainless Steel
7	Shaft Sleeve A	Aluminum Alloy/ Stainless Steel	16*	O-ring	NBR/ Silicone Rubber
8	Shaft Sleeve B	Aluminum Alloy/ Stainless Steel	17	Hexagonal Screw	Stainless steel
9	Valve Body	Aluminum Alloy/ Stainless Steel	N/A		
*Recommended Spare Parts		Please select appropriate spare parts according to the port size and model, included labels 2, 4, 5, 10, 11, 12, 13, 14, and 16.			

Outline Dimension:



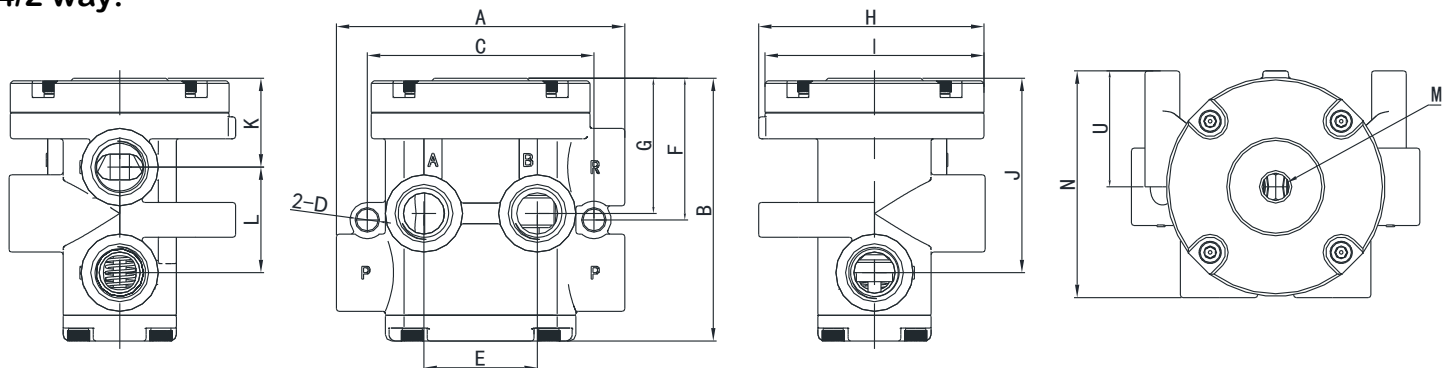
3/2 way:



Unit: mm

Port Size	A	B	C	D	E	F	G	H	I	J	K	L
3/8" & 1/2"	78.2	103.5	52	8.5	57.5	19	76	40.5	35	58	NPT1/4	76
3/4" & 1"	110	140.5	64	10.5	77	24.5	92	52	50	75	NPT1/4	92
1-1/2" & 2"	200	234	116	16.5	128	40	165	85	83.5	125	NPT1/4	165

4/2 way:



Unit: mm

Port Size	A	B	C	D	E	F	G	H	I	J	K	L	M	N	U
3/8" & 1/2"	112	102	88	8.5	44	55	52.5	87.5	85	75.5	34.5	41	NPT1/4	88	45
3/4" & 1"	156	135.5	119	10.5	57	69	66	107.5	105	99	40	59	NPT1/4	112	55