

Introudution and Features

Our 20-series Aluminum valve handwheel gearbox, 90 quarter turn drive device is suitable for butterfly valve, ball valve and plug valve and so on. The aluminum alloy material body after static electricity powder coating has an excellent appearance, strong adhesion/mechanical property and anti-corrosion/wear resistance.

- ISO5211 direct mount patterns.
- Filled with special lubricant before leaving the factory.
- Weather proof is IP65.
- The output torque range: 180-5500NM.
- 0-90° rotary, $\pm 5^\circ$ angle adjusting.



Ordering code

e.g: Series Model Valve square Flange Handwheel(\varnothing)
 20 - 070 - 11 - F05/F07 - 140

Detailed please reference selection.

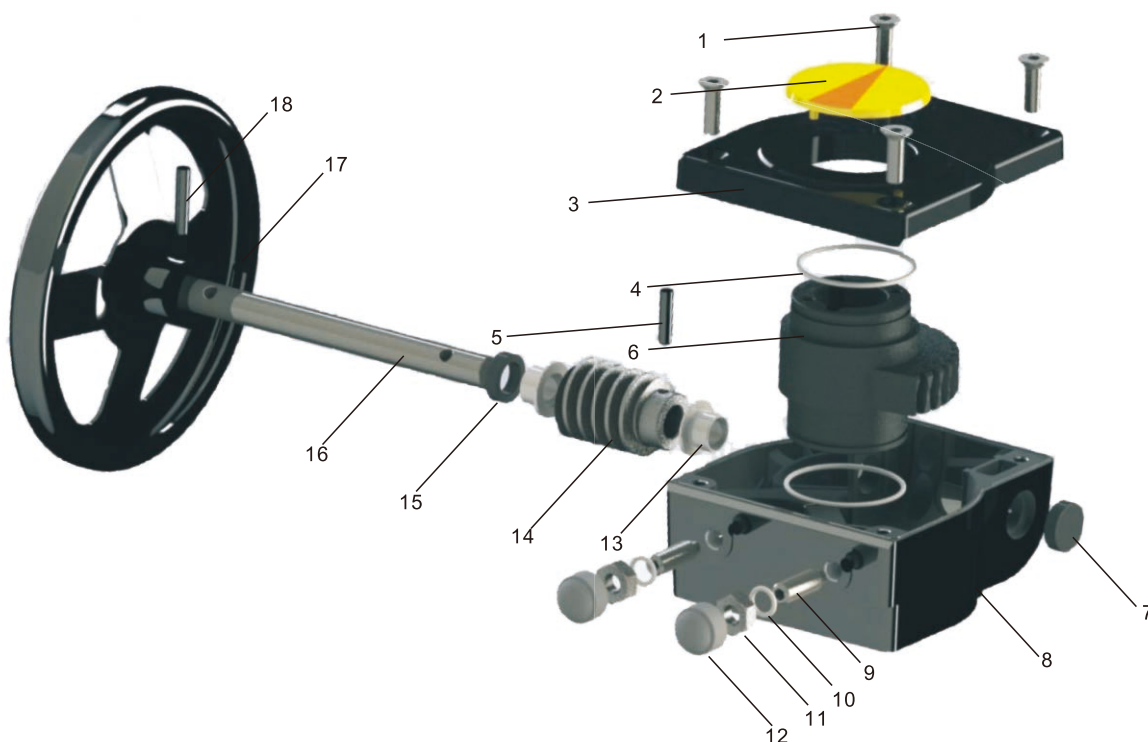
Reference Selection

Model	Square	ISO 5211 Flange Type *	Hand wheel \varnothing	Output/Input Torque Ratio	Max. Output Torque(Nm)	Butterfly valve	Ball valve	WT(KG)
20070	8/9/11/14/17	F05,F07	140	1:9.6	180	32-150	50	1.2
20090	8/9/11/14/17	F07,F09	200	1:12	300	32-200	63	2.1
20102	17/19/22	F07,F10	250	1:12.5	540	200-300	80	3.5
20125	17/19/22	F10,F12	300	1:12.5	675	250-350	100	4.8
20140	22/27	F10,F12,F14	400	1:10	1310	350-400	150	8.5
20140A	22/27	F10,F12,F14	400	1:10	1500	350-400	150	9.5
20140B	22/27/ $\varnothing 50 \times 14$	F10,F12,F14	600	1:11	1790	400-450	200	11
20165	36/ $\varnothing 50 \times 14$	F16	600	1:19	3250	450-500	250	17.5
20254	$\varnothing 60 \times 18 / \varnothing 65 \times 20 / \varnothing 80 \times 22$	F16,F25	700	1:19	5500	600-650	300	28
PS070	8/9/11/14	F05,F07	140	1:9.6	150	32-150	50	1

*PS Series Cover and Body is Engineer Plastics

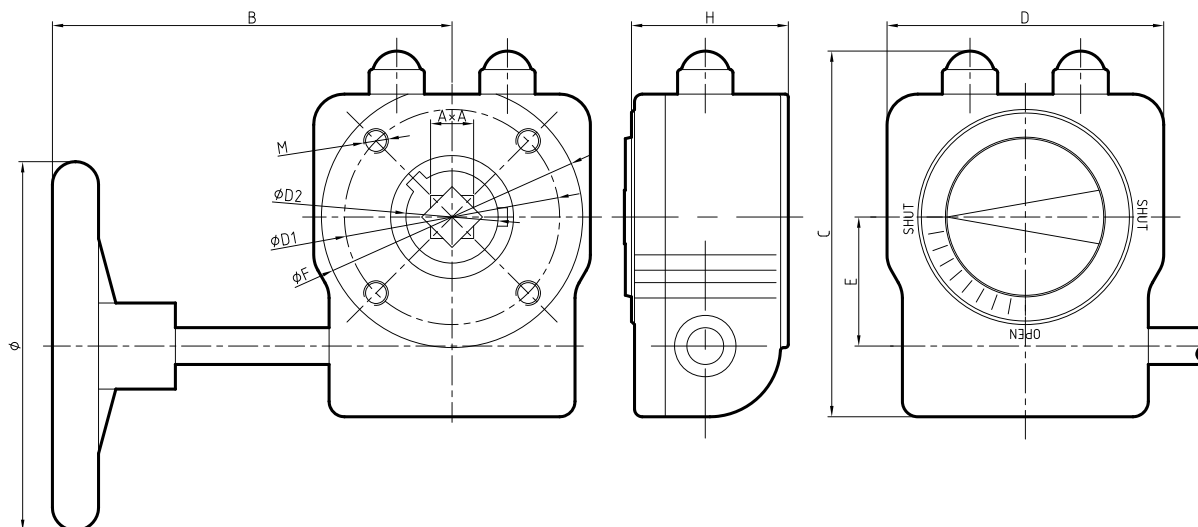
*ISO 5211 Flange single option but not both: F12 or F14, F14 or F16

Material and part list



NO.	Item	QTY	Material
1	Bolt	4	Stainless steel
2	Indicator	1	ABS resin
3	Cover	1	Aluminium polyester coating(20 Series) Engineering Plastics(PS Series)
4	O-Ring	2	NBR70
5	Pin	1	Spring Steel black
6	Worm gear	1	Ductile iron
7	Rear seal	1	NBR70
8	Body	1	Aluminium polyester coating(20 Series) Engineering Plastics(PS Series)
9	Adjusting Bolt	2	Steel black(Optional) SS304(Optional)
10	Adjusting Bolt Gasket	2	Galvanized steel(Optional) SS304(Optional)
11	Adjusting Nut	2	Galvanized steel(Optional) SS304(Optional)
12	Adjusting Nut Cap	2	NBR70
13	Bearing	2	Powder metallurgy
14	Worm	1	Carbon Steel 45#
15	Front seal	1	NBR70
16	Rotating shaft	1	Carbon Steel 45#(Optional) SS304(Optional)
17	Handwheel	1	Carbon steel polyester coating
18	Pin	1	Spring Steel black
	Bush	1	Carbon Steel 45#

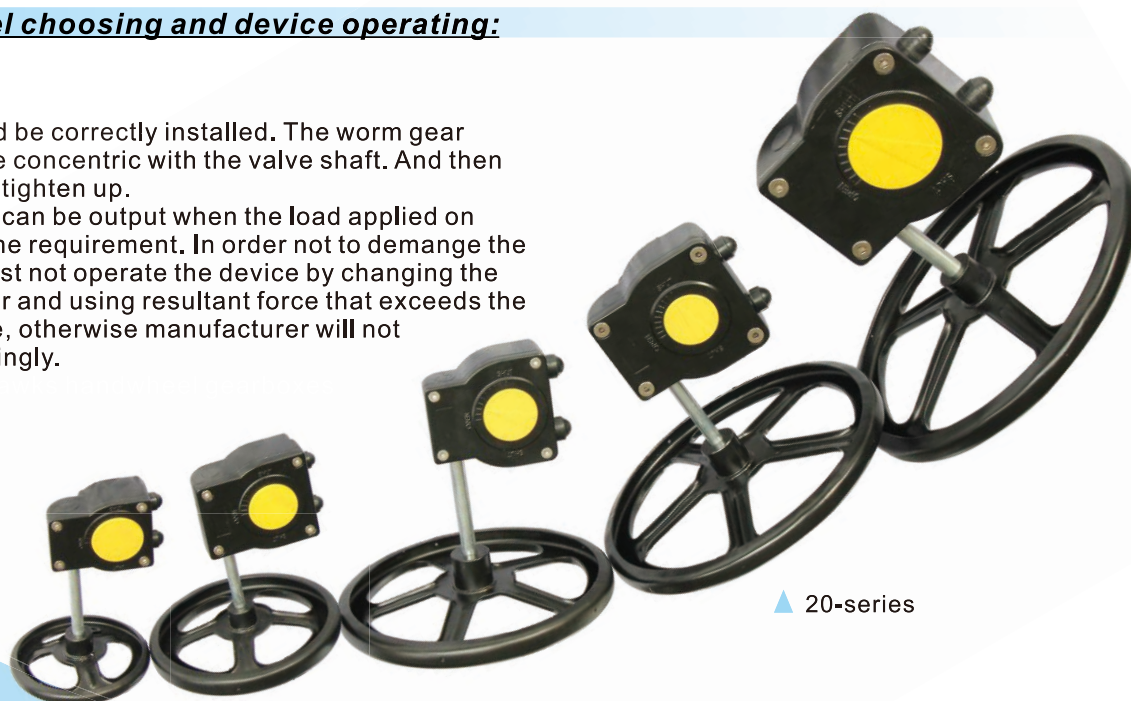
Dimension Table



Model	Gear Ratio	A×A	Deep	B	C	D	E	F	H	Ø	ØD1	M×Deep	ØD2
20070	1:40	8×8,9×9,11×11,14×14,17×17	45	160	115	80	42	78	48	140	50/70	4-M6×10/4-M8×12	30
20090	1:37	8×8,9×9,11×11,14×14,17×17	50	160	130	100	50	97	54	200	70/90	4-M8×12/4-M10×12	32
20102	1:36	17×17,19×19,22×22	53	215	150	120	60	117	56	250	70/102	4-M8×12/4-M10×15	43
20125	1:36	17×17,19×19,22×22	65	225	180	142	60	138	69	300	102/125	4-M8×12/4-M12×18	43
20140	1:50	22×22,27×27	80	325	215	178	77.5	174	83	400	140	4-M16×24	54
20140A	1:50	22×22,27×27	90	325	225	185	80	175	95	400	140	4-M16×24	54
20140B	1:39	22×22,27×27,Ø50×14	90	375	225	185	81.0	175	95	600	140	4-M16×24	50
20165	1:55	36×36,Ø50×14	100	395	268	230	104.5	220	105	600	165	4-M20×30	65
20254	1:52	Ø60×18,Ø65×20,Ø80×22	120	416	332	265	130	286	125	700	165/254	4-M20×30/8-M16×24	80
PS070	1:40	8×8,9×9,11×11,14×14,17×17	45	160	115	80	42	78	48	140	50/70	4-M6×10/4-M8×12	30

Guiding for model choosing and device operating:

- 1.The device should be correctly installed. The worm gear shaft hole should be concentric with the valve shaft. And then the screws must be tighten up.
- 2.The rating torque can be output when the load applied on handwheel meets the requirement. In order not to demange the device, the user must not operate the device by changing the handwheel diameter and using resultant force that exceeds the required input valve, otherwise manufacturer will not responsible accordingly.



▲ 20-series