

### Introuduction and Features

Our SW-series handwheel gearbox are special designed of gearbox cover can support the limit switch bracket, easy to amount the limit switch directly without any accessories. This series gearbox can control 90 degree rotary valves, such as butterfly valve, ball valve and plug valve and so on. The aluminum alloy material body after static electricity powder coating has an excellent appearance, strong adhesion/mechanical property and anti-corrosion/wear resistance.

- The output torque range:180-5500NM.
- ISO5211 direct mount patterns.
- Filled with special lubricant before leaving the factory.
- Weather proof is IP65.
- 0-90° rotary,  $\pm 5^\circ$  angle adjusting.
- Optional accessory include the position indicator, core joint, ect.



### Ordering code

e.g:      Series      Model      Valve square      Handwheel(ø)      Limit Switch box      Model      Type      Feedback  
          SW      -      070      -      11      -      140      -      ALS      200      M2      F

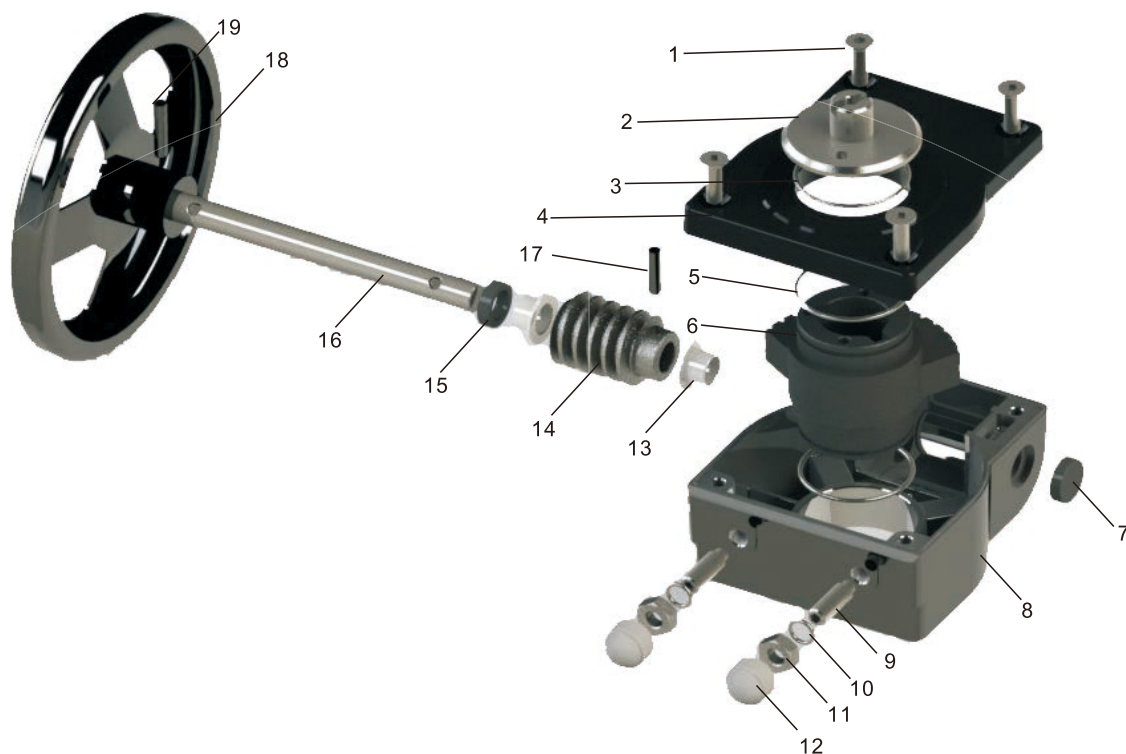
Limit switch model selection please reference the page of ALS series.  
 Detailed please reference selection.

### Reference Selection

Model	Square	ISO5211 Type	Hand wheel Ø	Output/Input Torque Ratio	Max. Output Torque(Nm)	Butterfly valve	Ball valve	WT(KG)
SW070	8/9/11/14/17	F05,F07	140	1:9.6	180	32-150	50	1.2
SW090	8/9/11/14/17	F07,F09	200	1:12	300	32-200	63	2.1
SW102	17/19/22	F07,F10	250	1:12.5	540	200-300	80	3.5
SW125	19/22	F10,F12	300	1:12.5	675	250-350	100	4.8
SW140	22/27	F10,F12,F14	400	1:10	1310	350-400	200	9.5
SW165	36/ø50X14	F14,F16	600	1:19	3250	450-500	250	17.5
SW254	ø60X18/ø65X20	F16,F25	700	1:19	5500	600-650	300	28

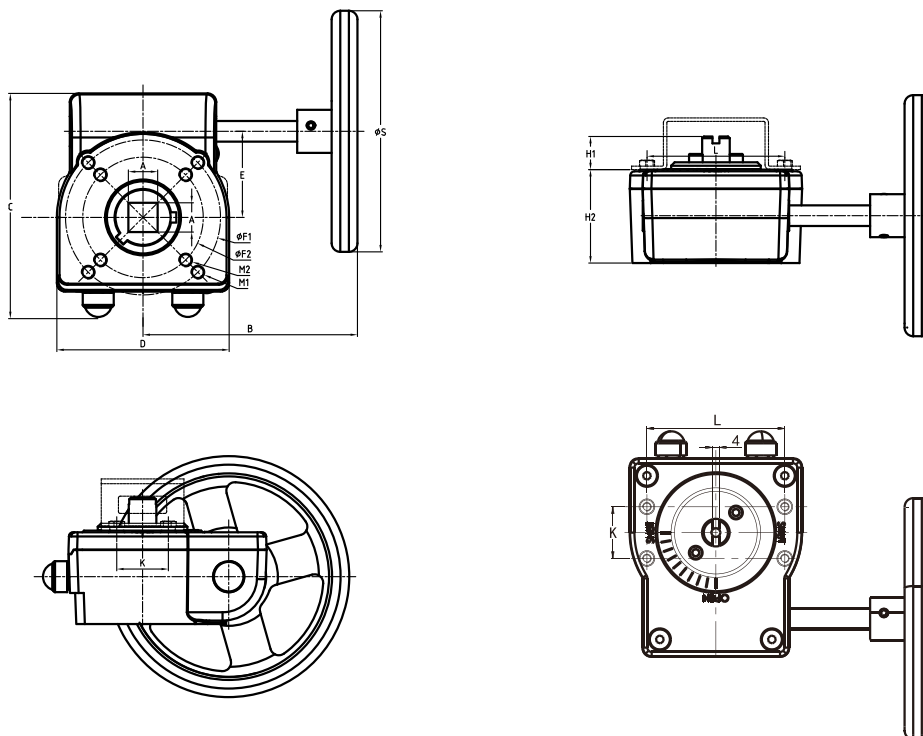
ISO 5211 Flange single option but not both:F12 or F14, F14 or F16. Joint standard is ISO5211(NAMUR) to fit valve

## Material and part list



NO.	Item	QTY	Material
1	Bolt	4	Stainless steel
2	Core Joint	1	Aluminium polyester coating
3	O-Ring	1	NBR 70
4	Cover	2	Aluminium polyester coating
5	O-Ring	1	NBR 70
6	Worm gear	1	Ductile iron
7	Rear seal	1	NBR 70
8	Body	1	Aluminium polyester coating
9	Adjusting Bolt	2	Steel black(Optional) SS304(Optional)
10	Adjusting Bolt Gasket	2	Galvanized steel(Optional) SS304(Optional)
11	Adjusting Nut	2	Galvanized steel(Optional) SS304(Optional)
12	Adjusting Nut Cap	2	NBR 70
13	Bearing	2	Power metallurgy
14	Worm	1	Carbon Steel 45#
15	Front seal	1	NBR 70
16	Rotating shaft	1	Carbon Steel 45#(Optional) SS304(Optional)
17	Pin	1	Spring Steel black
18	Hand wheel	1	Carbon steel polyster coating
19	Pin	1	Spring Steel black
	Bush	1	Carbon Steel 45#

**Dimension Table**



Model	A×A	B	C	D	E	F1	M1	F2	M2	K	L	H1	H2	S
SW070	8×8,9×9,11×11,14×14,17×17	160	115	80	42	70	M8	50	M6	25	50	20	48	140
SW090	8×8,9×9,11×11,14×14,17×17	160	130	100	50	90	M8	70	M8	30	80	20	54	200
SW102	17×17,19×19,22×22	215	150	120	60	102	M10	70	M8	30	80	20	56	250
SW125	19×19,22×22	225	180	140	60	125	M12	102	M10	30	80	20	69	300
SW140	22×22,27×27	325	215	178	77.5	140	M16	-	-	30	130	20	95	300
SW165	36×36,Ø50×14	395	268	230	104.5	165	M20	-	-	30	130	20	105	300
SW254	Ø60×18,Ø65×20,Ø80×22	416	332	265	130	165/254	M20/M16	-	-	30	130	20	125	300

Joint standard is NAMUR(VDI/VDE 3845) to fit limit switch.

